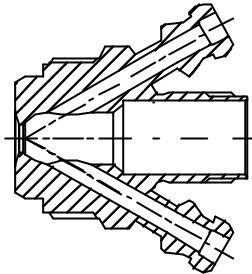
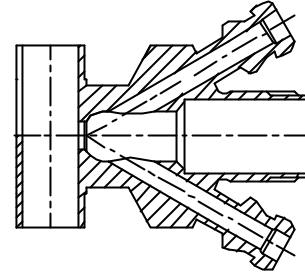


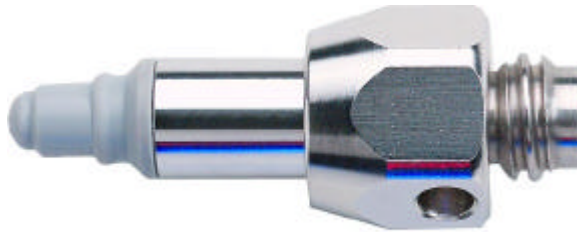
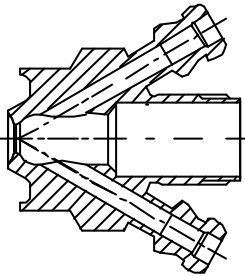
Valve body Type S
Item no.: 400031



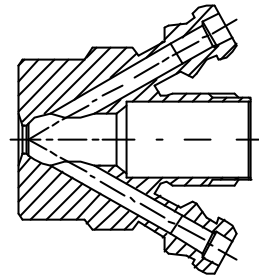
Valve body Type P
Item no.: 400017



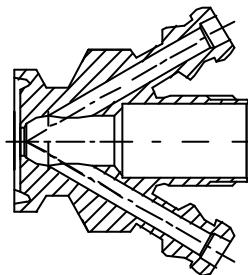
Valve body Type P
Item no.: 400011



Valve body Type T
Item no.: 400001



Valve body Type C
Item no.: 400021



Available with:

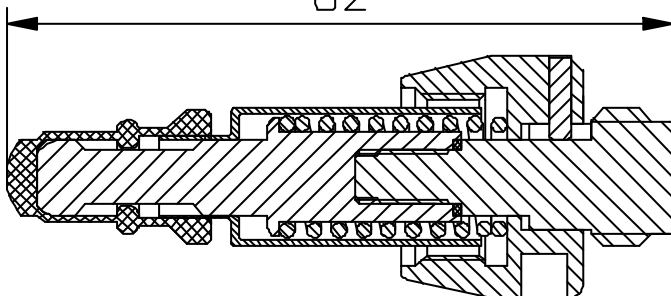


PTFE (TFM 1600)
membrane
Item no. 400055
Complete head 405541

EPDM membrane
Item no. 400052

Silicone membrane
Item no. 400051

82



Other Data:

Material: Steel parts AISI 301/303/316L
Membranes: FDA approved compounds.
EHEDG test report
3A-certificate



Where to use :	All types of M4 valve bodies.
How to use :	Manually operated.
Temp. range:	1 ⁰ C - 130 ⁰ C
Max. working pressure:	0 - 6 bar (g)
Key-ring not included.	(400076)