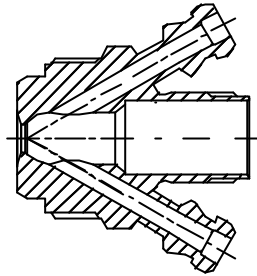
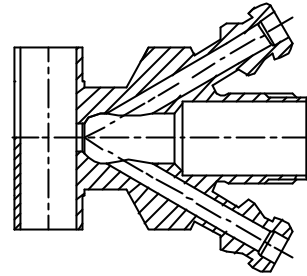


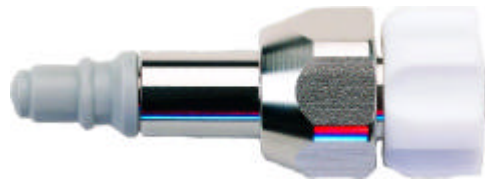
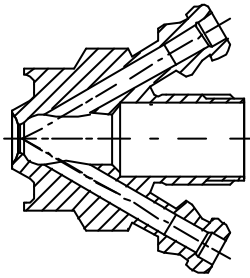
Valve body Type S
Item no.: 400031



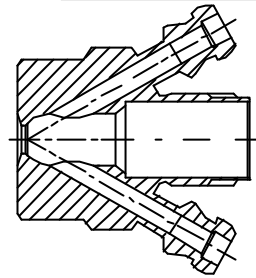
Valve body Type P
Item no.: 400017



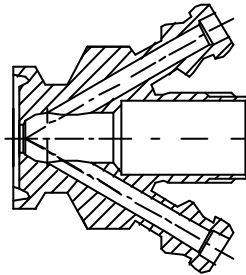
Valve body Type P
Item no.: 400011



Valve body Type T
Item no.: 400001



Valve body Type C
Item no.: 400021

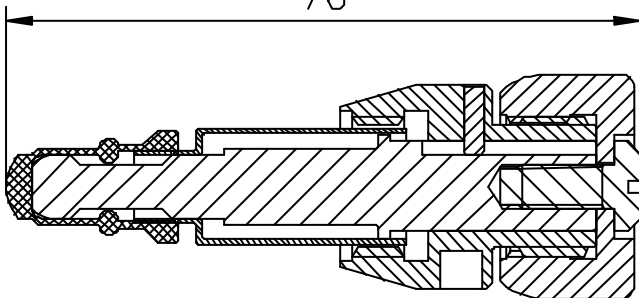


Available with:



- PTFE (TFM 1600) membrane
Item no. 400055
Complete head 405541
- EPDM membrane
Item no. 400052
- Silicone membrane
Item no. 400051

76



Other Data:

Material: Steel parts AISI 301/303/316L
PTFE
Membranes: FDA approved compounds.
EHEDG test report
3A-certificate

Where to use : All types of M4 valve bodies.
How to use : Manually operated.
Temp. range: 1° C - 130° C
Max. working pressure: 0 - 12 bar (g)